

5. Average Time to Degree

Table 5.1. Average Time to Terminal Master's Degree by School and Department, 2010-2014

Program	Degree	Time to Degree
CCPA		
Human Development	MA	3.0
Public Administration	MPA	2.6
Social Work	MSW	2.7
Student Affairs Administration	MS	2.3
GD CCPA Average		2.6
Graduate School of Education		
Master of Arts in Teaching		1.7
MS in Educational Studies		2.3
MS in Education		2.2
GD Education Average		2.0
Graduate School		
Materials Science and Engineering	MS	2.2
GD Grad School Average		2.2
Harpur School of Arts and Sciences		
Anthropology - MA	MA	3.8
Anthropology - MS	MS	1.9
Art History	MA	2.4
Biological Sciences - MA	MA	1.1
Biological Sciences - MS	MS	2.4
Chemistry - MA	MA	2.7
Chemistry - MS	MS	3.0
Comparative Literature	MA	1.7
Economics	MA	2.1
English	MA	2.0
Geological Sciences - MS	MS	5.4
Geography	MA	2.0
History	MA	2.2
Mathematical Sciences	MA	2.1
Music	MM	2.1
Philosophy - SPEL	MA	3.3
Physics	MS	4.0
Political Science	MA	2.3
Psychology	MS	2.3
Romance Languages	MA	2.2
Sociology	MA	3.5
Theatre	MA	2.6
GD Harpur Average		2.3

Table 5.1. Average Time to Terminal Master's Degree by School and Department, 2010-2014
(Cont'd)

Program	Degree	Time to Degree
School of Management		
Master of Business Administration		1.6
MS in Accounting		1.3
GD Management Average		1.4
School of Nursing		
MS in Nursing		2.7
GD Nursing Average		2.7
Watson School		
Bioengineering	MS	2.2
Computer Science	MS	2.6
Electrical and Computer Engineering - MENG	MENG	2.7
Electrical and Computer Engineering - MS	MS	2.2
Mechanical Engineering - MENG	MENG	1.6
Mechanical Engineering - MS	MS	1.9
Systems Science Industrial Engineering - MENG	MENG	2.3
Systems Science Industrial Engineering - MS	MS	2.3
GD Watson Average		2.4
University Average		2.1

Figure 5.1. Average Time to Master's Degree

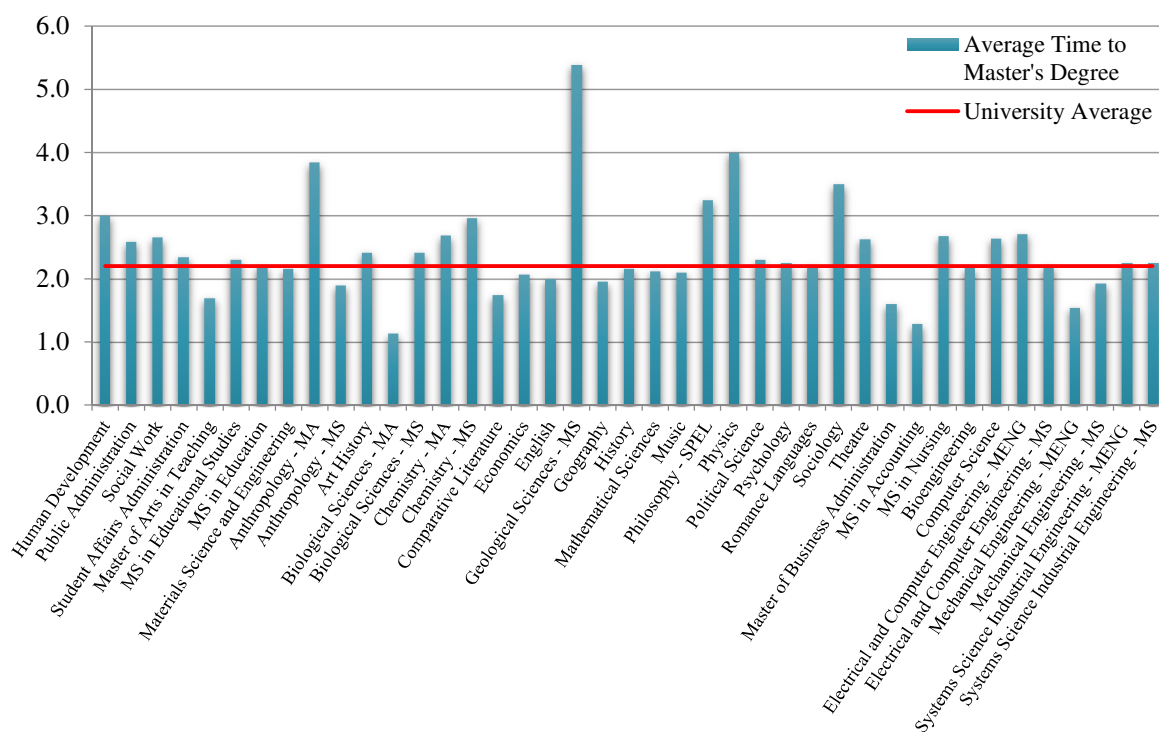


Table 5.2. Average Time to Doctoral Degree by School and Department, 2010-2014

Program	Degree	Time to Degree
Graduate School of Education		
EDD		7.6
GD Education Average		7.6
Graduate School		
Materials Science and Engineering	PHD	5.3
GD Grad School Average		5.3
Harpur School of Arts and Sciences		
Anthropology	PHD	10.6
Art History	PHD	8.9
Biological Sciences	PHD	5.4
Chemistry	PHD	5.8
Comparative Literature	PHD	6.2
Economics	PHD	6.2
English	PHD	6.0
Geological Sciences	PHD	5.8
History	PHD	8.4
Mathematical Sciences	PHD	5.9
Philosophy - SPEL	PHD	7.5
Philosophy - PIC	PHD	8.8
Physics	PHD	6
Political Science	PHD	5.8
Psychology	PHD	6.7
Sociology	PHD	10.3
Translation Studies	PHD	5.0
GD Harpur Total		7.0
School of Management		
PHD in Management		5.5
GD Management Total		5.5
School of Nursing		
DNP		3.9
PHD in Nursing		7.2
GD Nursing Total		5.7
Watson School		
Bioengineering	PHD	6.9
Computer Science	PHD	7.3
Electrical and Computer Engineering	PHD	6.2
Mechanical Engineering	PHD	5.4
Systems Science and Industrial Engineering	PHD	5.7
GD Watson Total		6.1
University Average		6.7

Figure 5.2. Average Time to Doctoral Degree

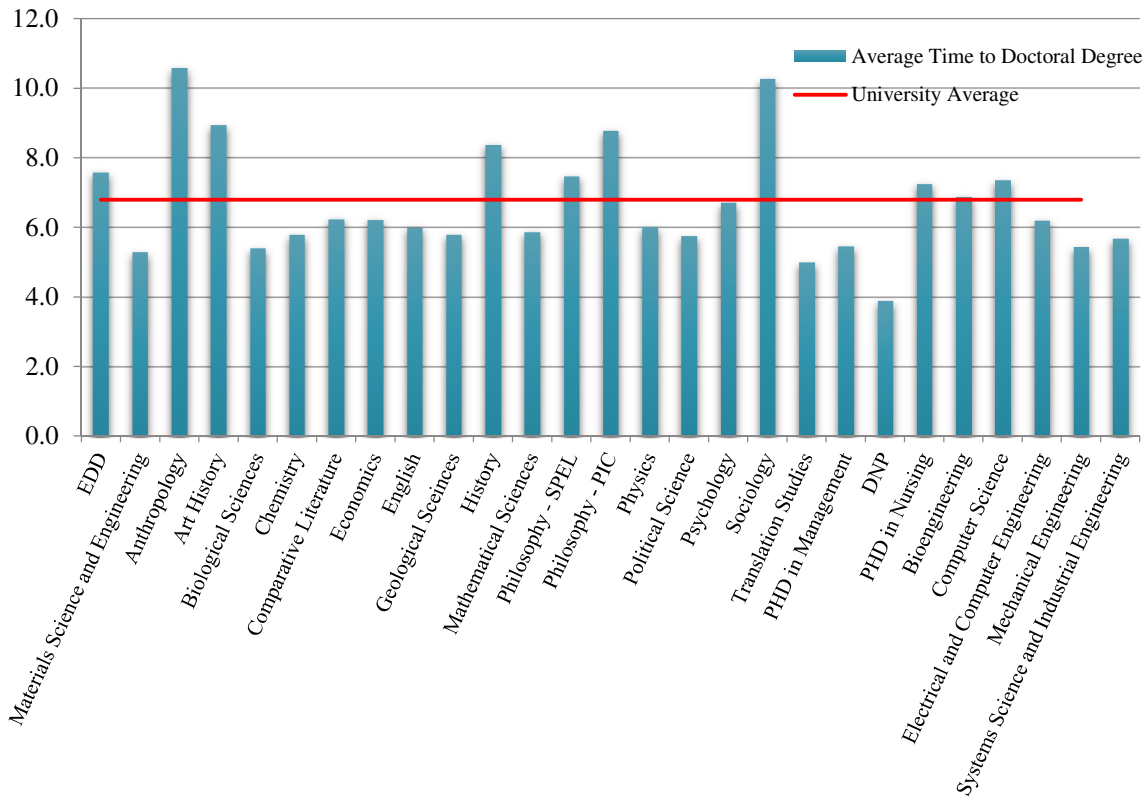




Table 5.3. The Outcomes of Doctoral Students by Year in Program with Kaplan-Meier Method, 2003-2014

Year in Program	Number of Students in Cohort	Number of Dropouts	Probability of Dropout	Number of Graduates	Probability of Graduation
1	1731	176	10%	0	0%
2	1555	135	9%	8	1%
3	1412	70	5%	20	1%
4	1322	34	3%	85	6%
5	1203	15	1%	136	11%
6	1052	9	1%	115	11%
7	928	5	1%	55	6%
8	868	2	0%	21	2%
9	845	2	0%	9	1%
10+	834	1	0%	4	0%
Summary Kaplan-Meier Statistic of Success^{§§}					74%

§§ Graduation or Continuation

Figure 5.3. Outcomes of Students Entering Doctoral Program, 2003-2014

	0	1	2	3	4	5	6	7	8	9	10+
100%		10%	18%	22%	24%	25%	25%	26%	26%	26%	26%
95%											
90%											
85%											
80%											
75%											
70%											
65%											
60%											
55%											
50%											
45%											
40%											
35%											
30%											
25%											
20%											
15%											
10%											
5%											
0%			0%	2%	7%	14%	21%	24%	25%	26%	26%

Legend
 Graduation
 Dropout