

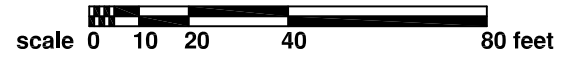
- Asbestos Free
- Presumed Asbestos Containing Material

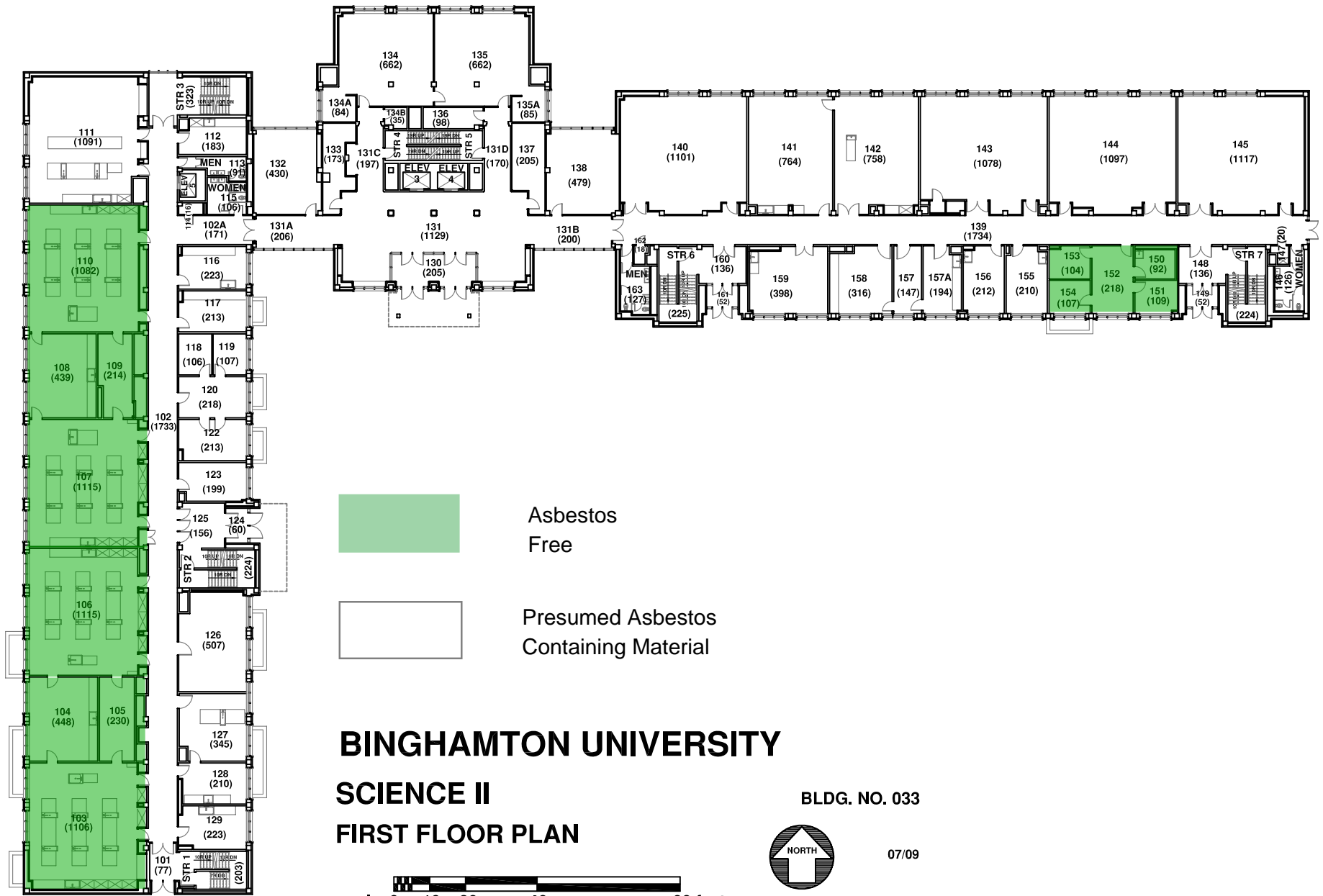
BINGHAMTON UNIVERSITY
SCIENCE II
BASEMENT FLOOR PLAN



BLDG. NO. 033



07/09





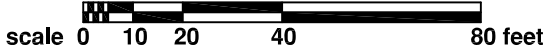
 Asbestos Free
 Presumed Asbestos Containing Material

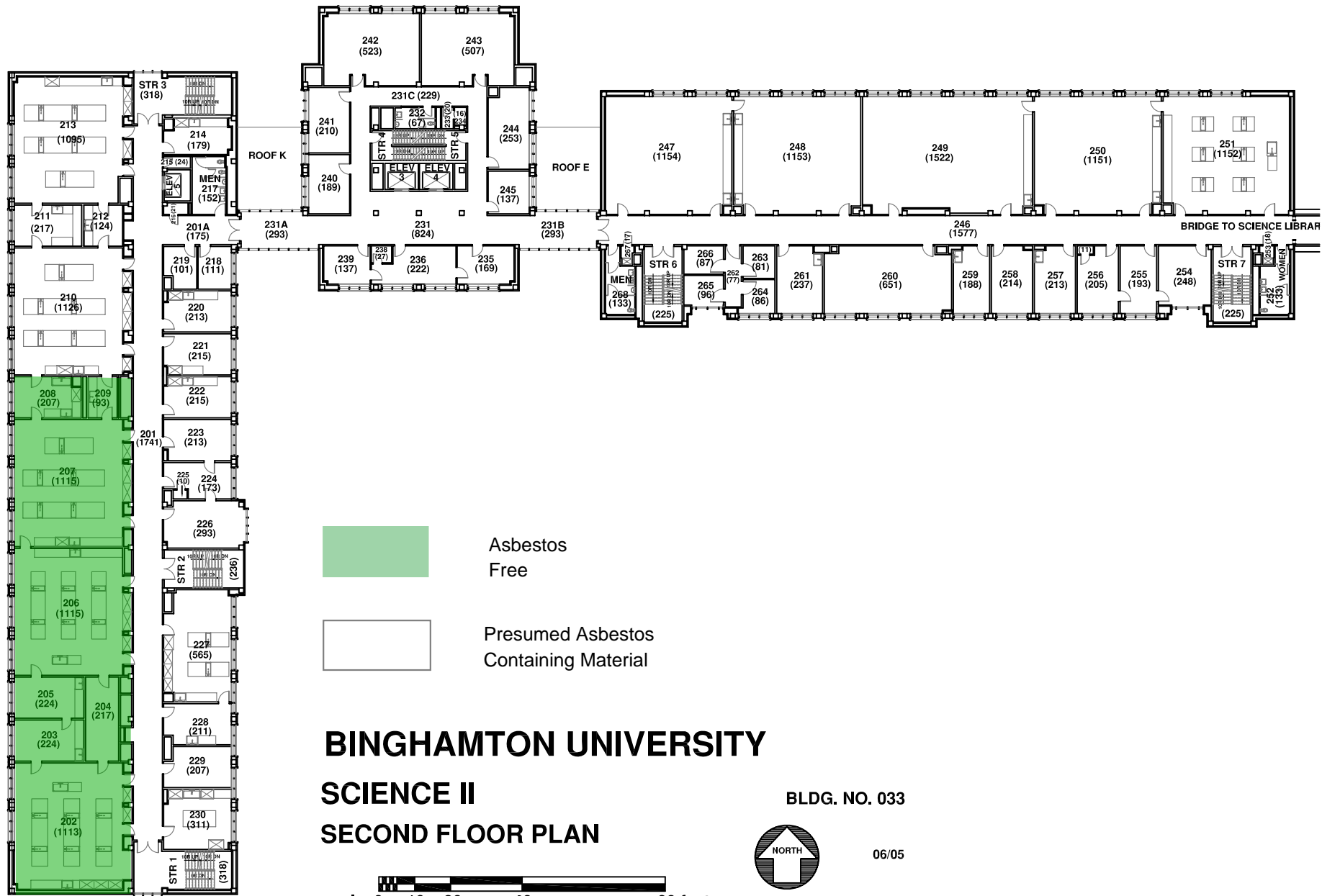
BINGHAMTON UNIVERSITY
SCIENCE II
FIRST FLOOR PLAN

BLDG. NO. 033



07/09



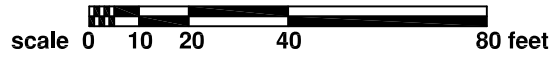


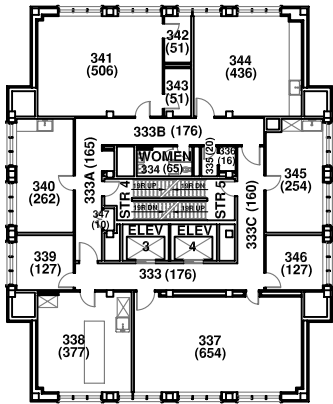
BINGHAMTON UNIVERSITY
SCIENCE II
SECOND FLOOR PLAN

BLDG. NO. 033

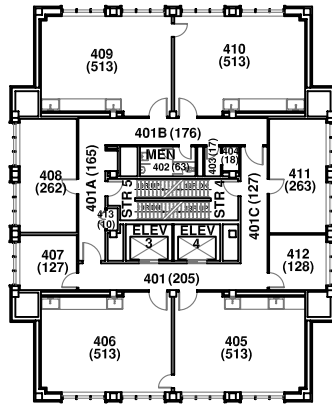


06/05

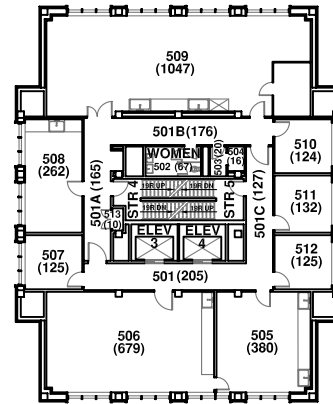




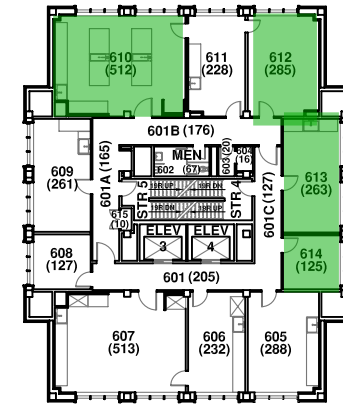
THIRD FLOOR PLAN
Gross Area: 4,822 sf



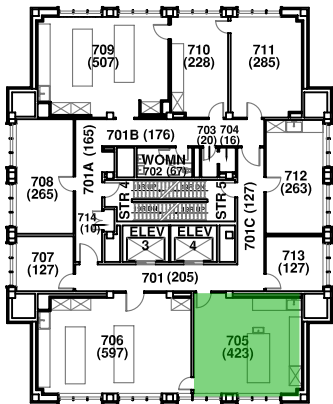
FOURTH FLOOR PLAN
Gross Area: 4,822 sf



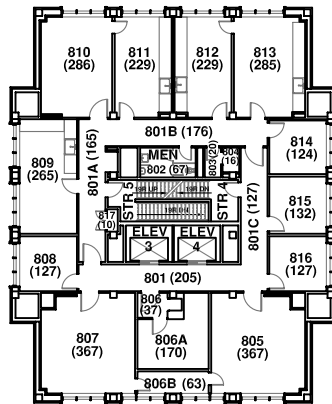
FIFTH FLOOR PLAN
Gross Area: 4,822 sf



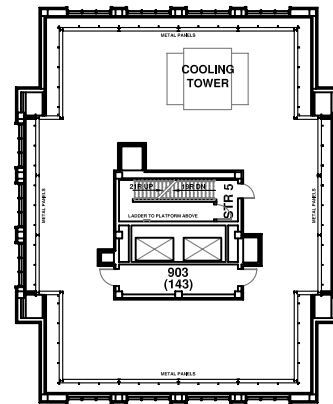
SIXTH FLOOR PLAN
Gross Area: 4,822 sf



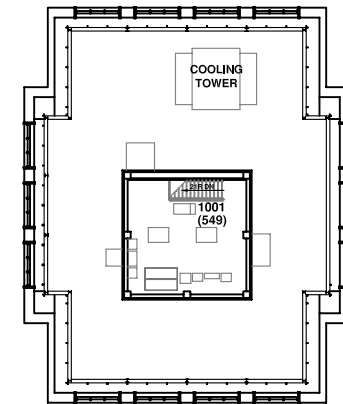
SEVENTH FLOOR PLAN
Gross Area: 4,822 sf



EIGHTH FLOOR PLAN
Gross Area: 4,822 sf



NINTH FLOOR PLAN (FAN ROOM)
Gross Area: 743 sf



TENTH FLOOR PLAN (ELEV. MACH. RM.)
Gross Area: 676 sf

- Asbestos Free
- Presumed Asbestos Containing Material

BINGHAMTON UNIVERSITY

SCIENCE II

TOWER - FLOORS 3 THRU 10

BLDG. NO. 033



07/09

